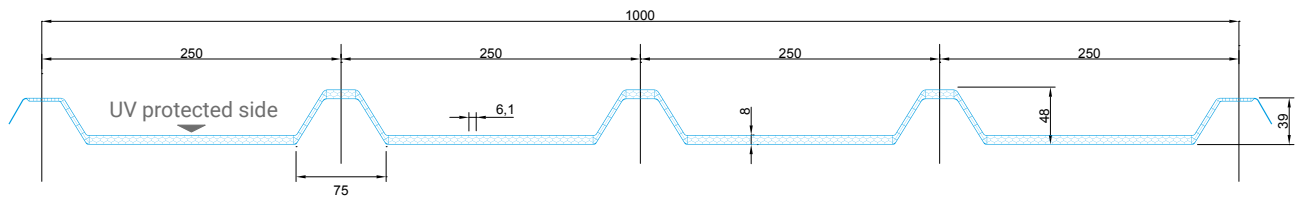
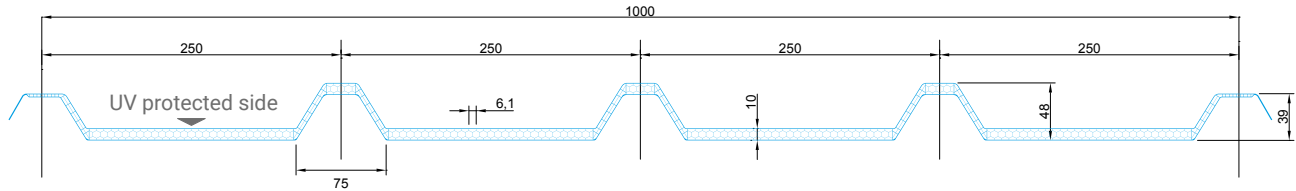


# GRECA

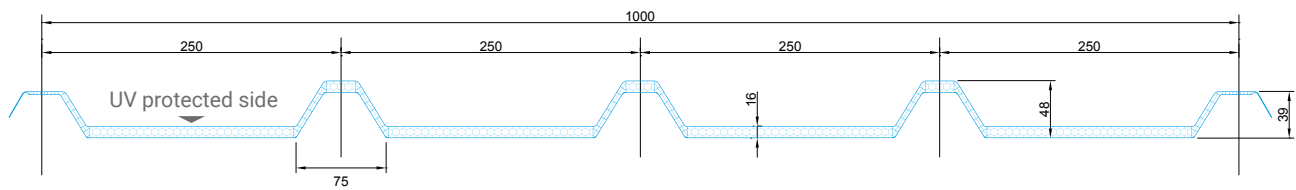
POLYCARBONATE MULTIWALL CORRUGATED SHEETS WITH COEXTRUDED UV PROTECTION



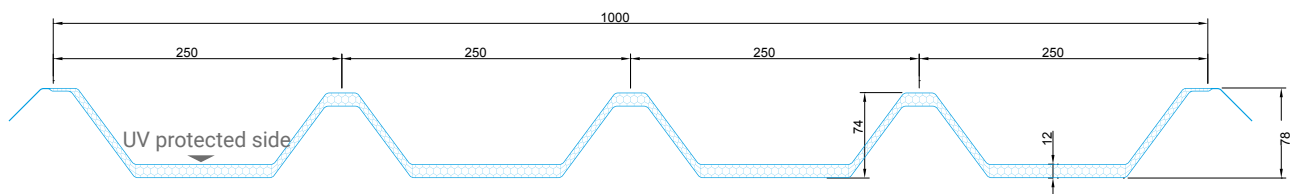
Greca 250-40-8 mm



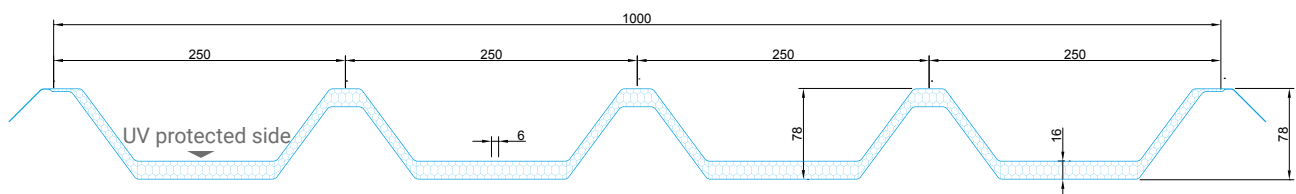
Greca 250-40-10 mm



Greca 250-40-16 mm



Greca 250-75-12 mm (based on minimum of quantity)



Greca 250-75-16 mm (based on minimum of quantity)

## GRECA CHARACTERISTICS

Thickness	8 mm	10 mm	16 mm	12 mm	16 mm
Structure	Honeycomb structure				
Depth	40 mm			78 mm	
Cover width	1000 (± 5 mm)				
Panel length	On request (maximum recommended length 7 m)				
Estimated thermal transmittance	2,7 W/m <sup>2</sup> K	2,5 W/m <sup>2</sup> K	2,0 W/m <sup>2</sup> K	2,3 W/m <sup>2</sup> K	2,0 W/m <sup>2</sup> K
Service temperature	- 40 °C / + 120 °C				
UV protection	Coextruded on the external side				
Thermal expansion	65 x 10 <sup>-6</sup> K <sup>-1</sup> (=0,065 mm/m °C)				
Light transmission*	Clear (0010)	59% (±5)	58% (±5)	56% (±5)	72% (±5)
	Opal (0035)	41% (±5)	40% (±5)	34% (±5)	55% (±5)
Warranty	Limited 10-yrs warranty against breakage due to hailstones, yellowing and loss of light transmission				

\* value according to internal test method

# APPLICATION AND STRENGTHS

GRECA are polycarbonate multiwall corrugated sheets with an honeycomb structure and a cover width of 1000 mm. Sheets have been developed for lateral overlaps to most insulated panels and / or corrugated metal sheets available on the market. Designed for the installation of skylights both in single and multiple applications, thanks to the possibility of longitudinal and / or lateral overlapping, they are also available in thermocurved version (except GRECA 250/75), with bending radii of 3500 mm or 6000 mm.

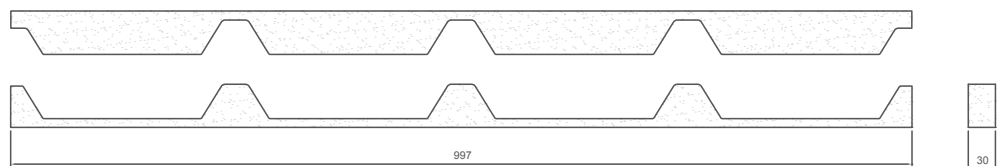
The side wing has a multiwall structure to reduce the problem of condensation. GRECA sheets have a good light transmission and, thanks to their coextruded UV protection, they guarantee a high degree of protection against UV rays, yellowing and hail damage. The corrugated shape provides good resistance to external loads (snow and / or wind), while the typical polycarbonate features provide excellent resistance to accidental shocks and temperature leaps. The system is completed by a range of accessories that complete the installation.

## SPECIFICATIONS

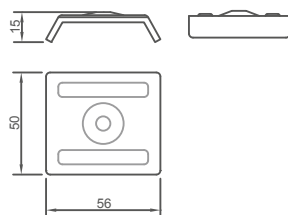
Construction of flat or curved skylights (radii 3500 mm or 6000 mm) with polycarbonate multiwall corrugated sheets type GRECA 250/40, thickness 8 mm / 10 mm / 16 mm, honeycomb structure, coextruded UV protection on the external layer, thermosealing of heads; cover width of 1000 mm, length on request; estimated thermal transmittance  $U_g = 2,7 \text{ W/m}^2 \text{ K}$  (for 8 mm thick.) /  $U_g = 2,5 \text{ W/m}^2 \text{ K}$  (for 10 mm thick.) /  $U_g = 2,0 \text{ W/m}^2 \text{ K}$  (for 16 mm thick.); ten-years limited warranty. The following accessories are available on request: PE spacer (upper and / or lower), pre-painted metal half ridge, fixing screw (for metal supports only), aluminium caps, fiberglass head.

Construction of flat skylights with polycarbonate multiwall corrugated sheets type GRECA 250/75, thickness 12 mm / 16 mm, honeycomb structure, coextruded UV protection on the external layer, thermosealing of heads; cover width of 1000 mm, length on request; estimated thermal transmittance  $U_g = 2,3 \text{ W/m}^2 \text{ K}$  (for 12 mm thick.) /  $U_g = 2,0 \text{ W/m}^2 \text{ K}$  (for 16 mm thick.); ten-years limited warranty. The following accessories are available on request: PE spacer (upper and / or lower), pre-painted metal half ridge, fixing screw (for metal supports only), aluminium caps.

## ACCESSORIES



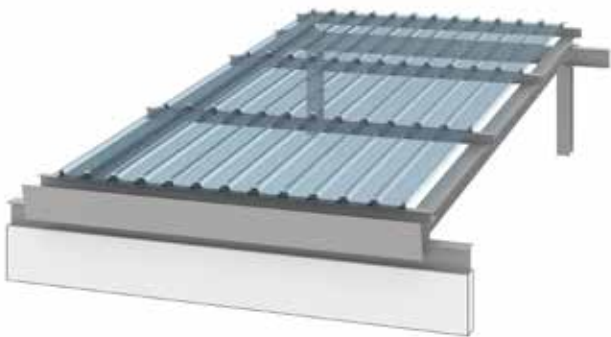
PE SPACER



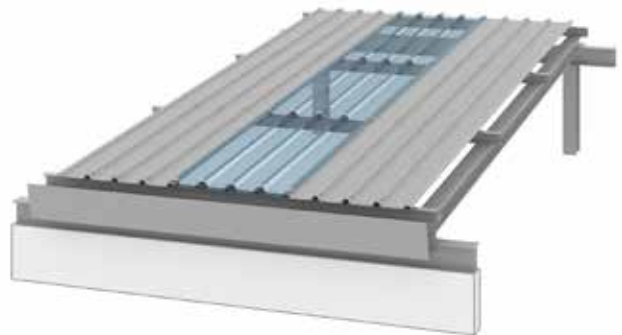
ALUMINIUM CAP



FIXING SCREW



CONTINUOUS APPLICATION



SINGLE APPLICATION

